



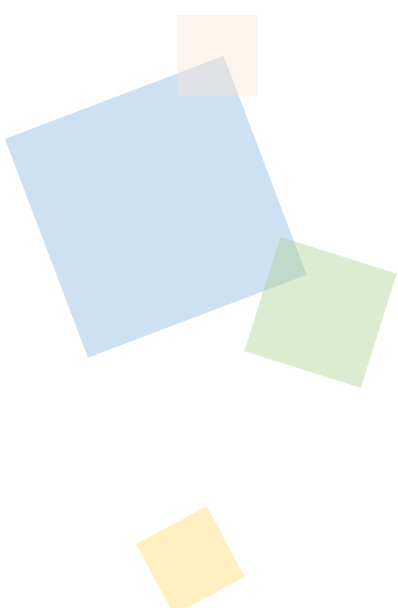
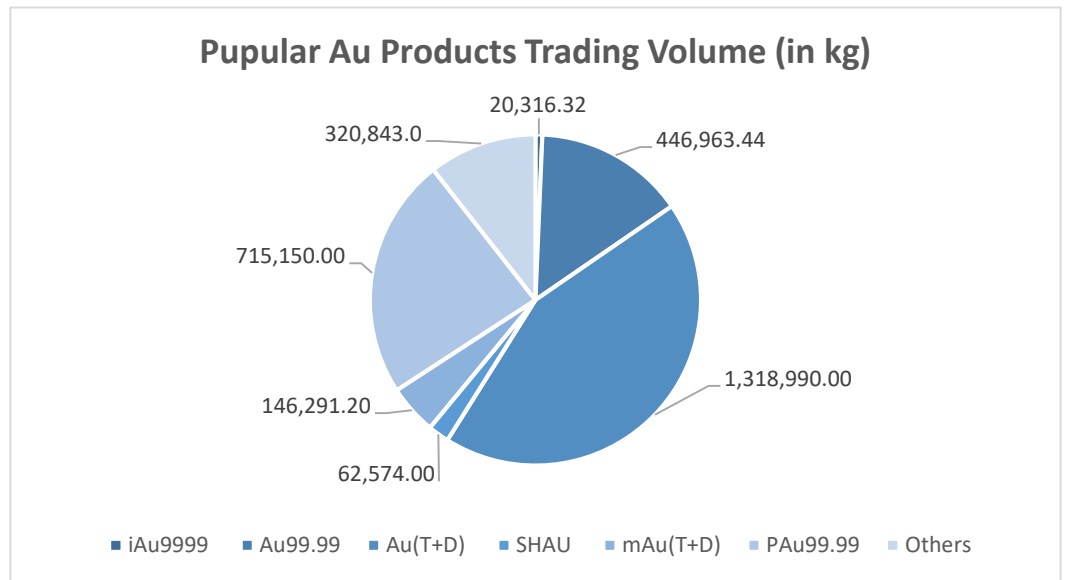
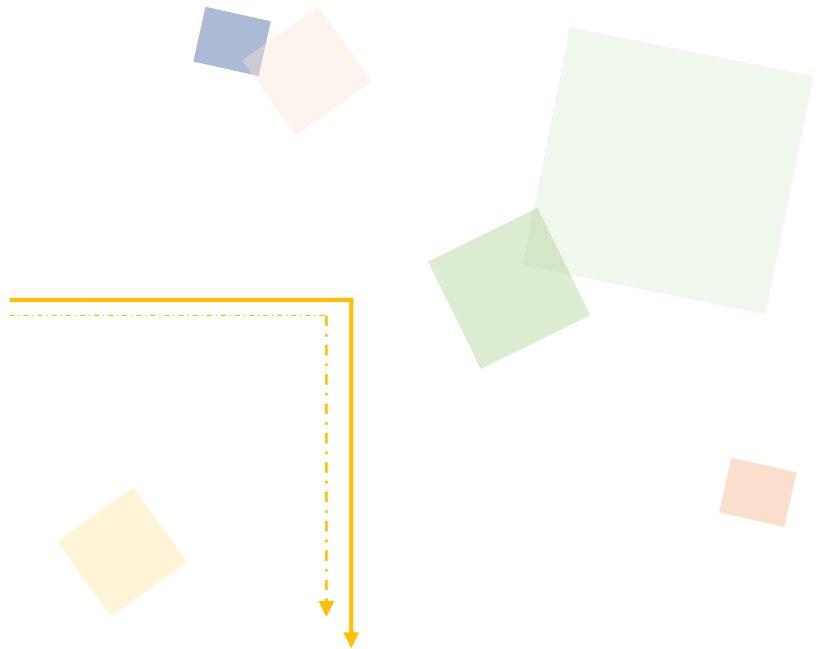
## Trading Volume & Amount in Charts

### ■ VOLUME

#### Popular Products (Trading Volume)

**Total: 83,301,771.96 kg**

- ◆ Au Products: 3,031,127.96 kg
- ◆ Ag (T+D): 80,222,018.00 kg
- ◆ Others: 48,626.00 kg





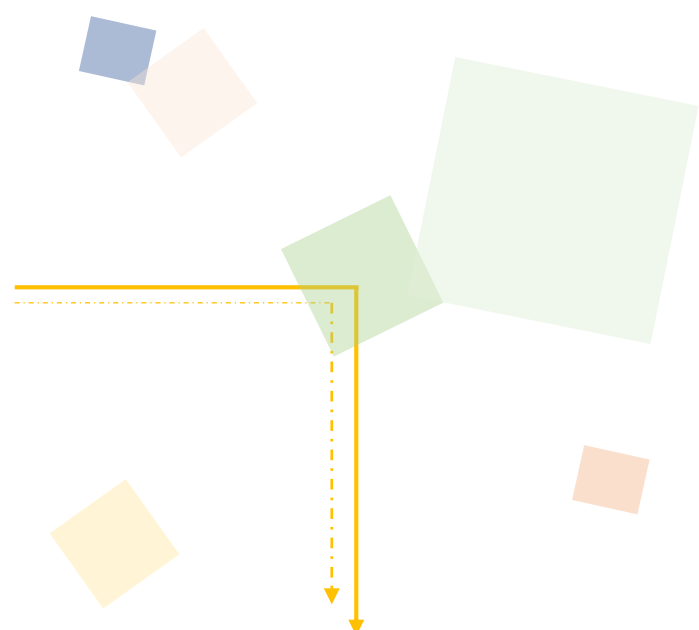
## Trading Volume & Amount in Charts

### AMOUNT

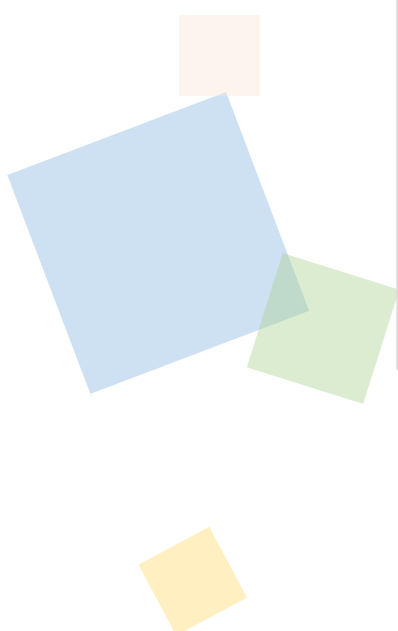
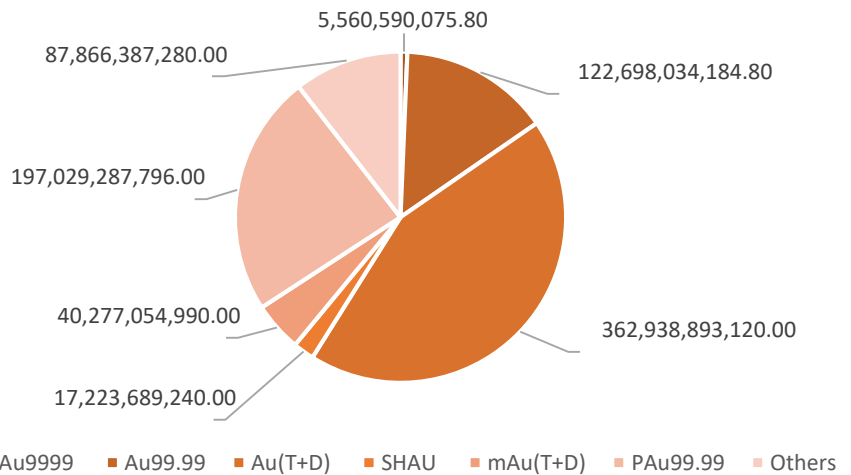
#### Popular Products (Trading Amount)

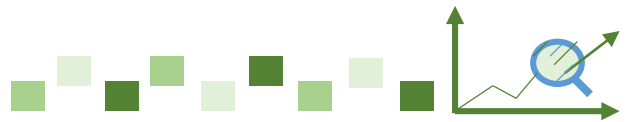
**Total: 1,165,603,955,414.60 RMB**

- ◆ Au Products: 833,593,936,686.60 RMB
- ◆ Ag (T+D): 331,115,797,638.00 RMB
- ◆ Others: 894,221,090.00 RMB



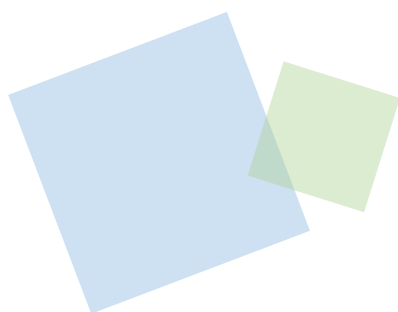
#### Popular Au Products Trading Amount (in RMB)

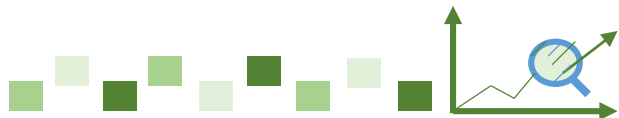




## Trading Volume & Amount in Details

Trading Volume (in kg)							
Contract	Previous Month Daily Average	Present Month Daily Average	Previous Month accumulative total	Present Month accumulative total	Month-on -Month	Year-on -Year	Present Year accumulative total
Au99.95	1,673.78	1,458.44	30,128.00	26,252.00	-12.87%	-45.87%	56,380.00
Au99.99	28,641.81	24,831.30	515,552.54	446,963.44	-13.30%	30.34%	962,515.98
Au100g	32.09	49.99	577.60	899.80	55.78%	-40.06%	1,477.40
Au50g	---	---	---	---	---	---	---
Au995	0.00	52.78	0.00	950.00	---	---	950.00
iAu9999	4,210.36	1,128.68	75,786.54	20,316.32	-73.19%	430.47%	96,102.86
iAu100g	0.02	0.02	0.40	0.40	0.00%	-91.67%	0.80
iAu995	---	---	---	---	---	---	---
Au(T+D)	71,076.78	73,277.22	1,279,382.00	1,318,990.00	3.10%	7.13%	2,598,372.00
mAu(T+D)	8,644.90	8,127.29	155608.2	146,291.20	-5.99%	43.28%	301,899.40
Au(T+N1)	365.06	251.01	6,571.00	4,518.20	-31.24%	-96.18%	11,089.20
Au(T+N2)	43.16	146.48	776.80	2,636.60	239.42%	-97.95%	3,413.40
PAu99.95	678.56	732.56	12,214.00	13,186.00	7.96%	44.36%	25,400.00
PAu99.99	38,433.44	39,730.56	691,802.00	715,150.00	3.37%	-5.04%	1,406,952.00
PiAu99.99	31,825.33	15,133.33	572,856.00	272,400.00	-52.45%	379.58%	845,256.00
PiAu50g	---	---	---	---	---	---	---
PiAu99.5	---	---	---	---	---	---	---
SHAU	4,104.67	3,476.33	73,884.00	62,574.00	-15.31%	---	136,458.00
Au Products (in total)	189,729.95	168,396.00	3,415,139.08	3,031,127.96	-11.24%	8.41%	6,446,267.04
Pt99.95	134.67	164.78	2,424.00	2,966.00	22.36%	15.77%	5,390.00
Ag99.9	---	---	---	---	---	---	---
Ag99.99	1,060.00	2,536.67	19,080.00	45,660.00	139.31%	22.05%	64,740.00
Ag(T+D)	4,009,636.22	4,456,778.78	72,173,452.00	80,222,018.00	11.15%	173.11%	152,395,470.00
<b>Total</b>	<b>4,200,560.84</b>	<b>4,627,876.22</b>	<b>75,610,095.08</b>	<b>83,301,771.96</b>	<b>10.17%</b>	<b>158.62%</b>	<b>158,911,867.04</b>

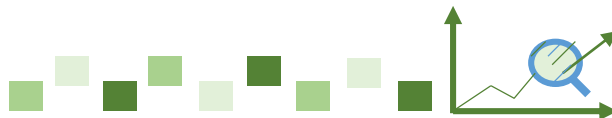




## Trading Volume & Amount in Details

Trading Amount (in RMB)							
Contract	Previous Month Daily Average	Present Month Daily Average	Previous Month accumulative total	Present Month accumulative total	Month-on -Month	Year-on -Year	Present Year accumulative total
Au99.95	444,111,223.33	401,071,346.67	7,994,002,020.00	7,219,284,240.00	-9.69%	-41.92%	15,213,286,260.00
Au99.99	7,596,609,891.88	6,816,557,454.71	136,738,978,053.80	122,698,034,184.80	-10.27%	42.63%	259,437,012,238.60
Au100g	8,614,658.33	13,779,178.33	155,063,850.00	248,025,210.00	59.95%	-34.33%	403,089,060.00
Au50g	---	---	---	---	---	---	---
Au995	0.00	14,495,416.67	0.00	260,917,500.00	---	---	260,917,500.00
iAu9999	1,109,650,513.47	308,921,670.88	19,973,709,242.40	5,560,590,075.80	-72.16%	460.57%	25,534,299,318.20
iAu100g	5,677.89	6,100.00	102,202.00	109,800.00	7.43%	-90.81%	212,002.00
iAu995	---	---	---	---	---	---	---
Au(T+D)	19,041,451,177.78	20,163,271,840.00	342,746,121,200.00	362,938,893,120.00	5.89%	16.65%	705,685,014,320.00
mAu(T+D)	2,315,853,914.33	2,237,614,166.11	41,685,370,458.00	40,277,054,990.00	-3.38%	55.71%	81,962,425,448.00
Au(T+N1)	98,352,906.11	69,622,001.67	1,770,352,310.00	1,253,196,030.00	-29.21%	-95.78%	3,023,548,340.00
Au(T+N2)	11,852,798.89	41,455,421.11	213,350,380.00	746,197,580.00	249.75%	-97.71%	959,547,960.00
PAu99.95	173,742,178.89	202,354,384.44	3,127,359,220.00	3,642,378,920.00	16.47%	61.90%	6,769,738,140.00
PAu99.99	10,211,239,598.11	10,946,071,544.22	183,802,312,766.00	197,029,287,796.00	7.20%	3.97%	380,831,600,562.00
PiAu99.99	8,493,633,833.33	4,138,682,111.11	152,885,409,000.00	74,496,278,000.00	-51.27%	404.48%	227,381,687,000.00
PiAu50g	---	---	---	---	---	---	---
PiAu99.5	---	---	---	---	---	---	---
SHAU	1,101,518,118.89	956,871,624.44	19,827,326,140.00	17,223,689,240.00	-13.13%	---	37,051,015,380.00
Au Products (in total)	50,606,636,491.23	46,310,774,260.37	910,919,456,842.20	833,593,936,686.60	-8.49%	18.13%	1,744,513,393,528.80
Pt99.95	31,015,645.56	39,217,851.11	558,281,620.00	705,921,320.00	26.45%	33.23%	1,264,202,940.00
Ag99.9	---	---	---	---	---	---	---
Ag99.99	4,253,703.33	10,461,098.33	76,566,660.00	188,299,770.00	145.93%	47.85%	264,866,430.00
Ag(T+D)	16,092,425,320.78	18,395,322,091.00	289,663,655,774.00	331,115,797,638.00	14.31%	237.95%	620,779,453,412.00
<b>Total</b>	<b>66,734,331,160.90</b>	<b>64,755,775,300.81</b>	<b>1,201,217,960,896.20</b>	<b>1,165,603,955,414.60</b>	<b>-2.96%</b>	<b>44.92%</b>	<b>2,366,821,916,310.80</b>





## Other Market Data

### Delivery Volume

Delivery Volume (in kg)		
	Gold	Silver
Delivery Volume (Present Month)	820,877.76	550,800.00
Trading Volume (Present Month)	2,030,391.96	80,267,678.00
Delivery Ratio (Present Month)	40.43%	0.69%
Delivery Volume (Accumulative Total)	1,850,877.44	1,025,850.00
Trading Volume (Accumulative Total)	4,168,659.04	152,460,210.00
Delivery Ratio (Accumulative Total)	44.40%	0.67%
Withdrawal Volume (Present Month)	179,236.70	70,260.00
Withdrawal Volume (Accumulative Total)	378,648.80	173,925.00

### Price Comparison Chart (Gold)

