



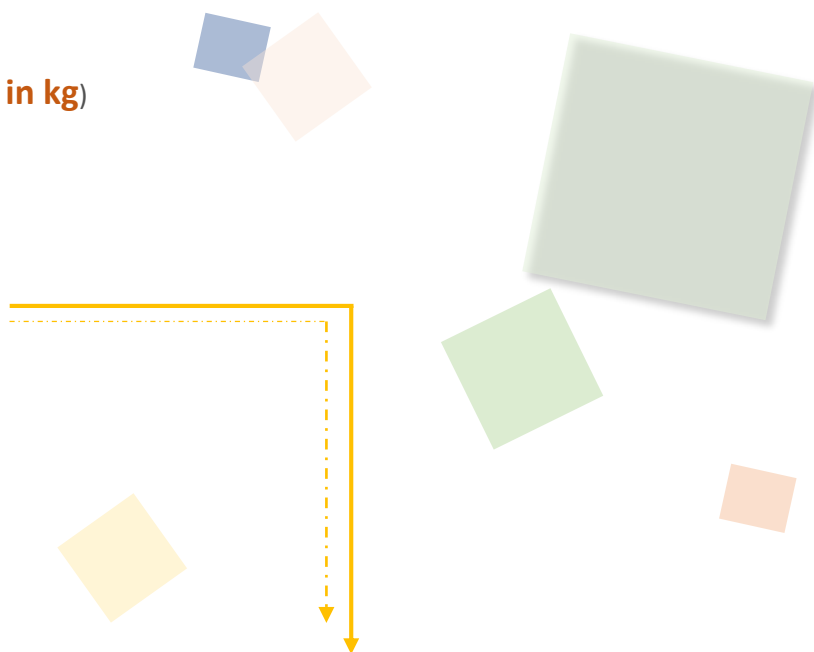
## Trading Volume & Amount in Charts

### ■ VOLUME

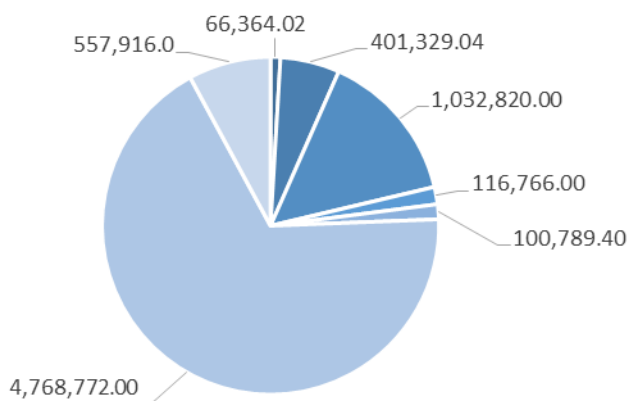
#### Popular Products (Trading Volume, in kg)

**Total: 81,189,640.50**

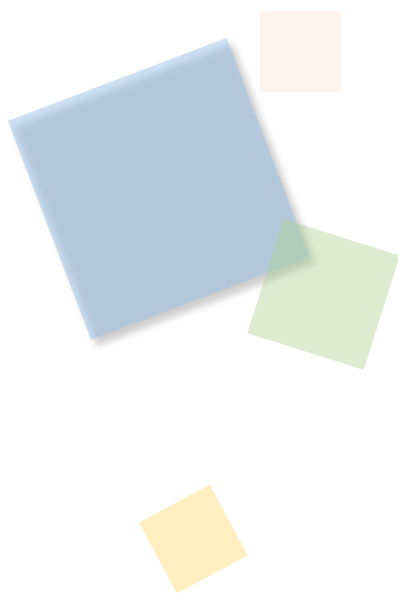
- ◆ Au Products: 7,044,756.50
- ◆ Ag (T+D): 69,927,884.00
- ◆ Others: 4,217,000.00



#### Popular Au Products Trading Amount (in 10,000 RMB)



■ iAu9999 ■ Au99.99 ■ Au(T+D) ■ SHAU ■ mAu(T+D) ■ PAu99.99 ■ Others





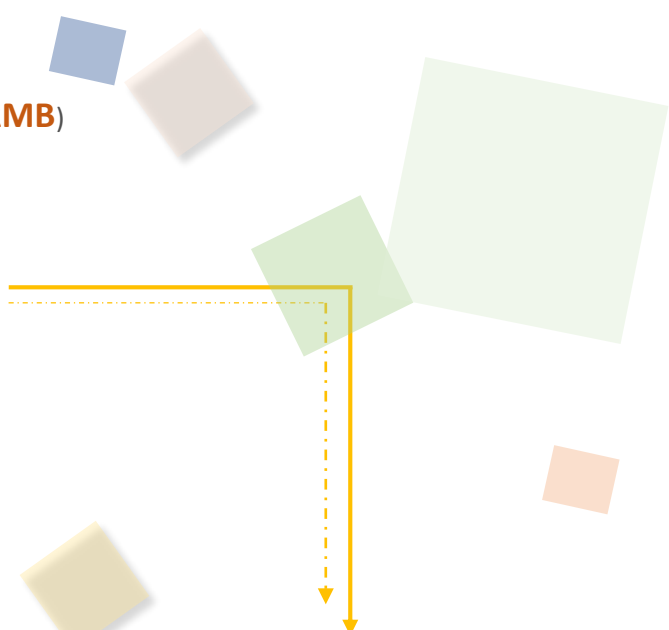
## Trading Volume & Amount in Charts

### AMOUNT

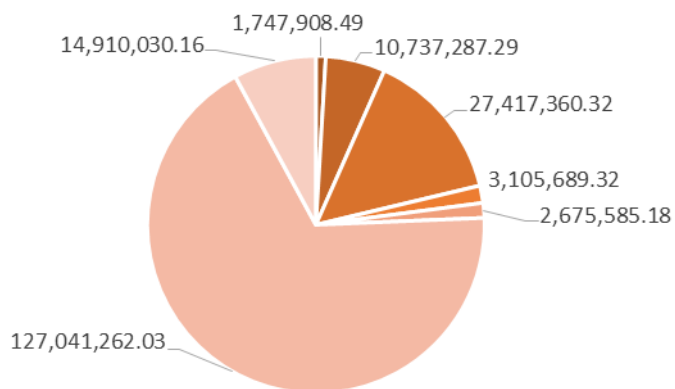
#### Popular Products (Trading Amount, in 10,000 RMB)

**Total: 213,968,074.57**

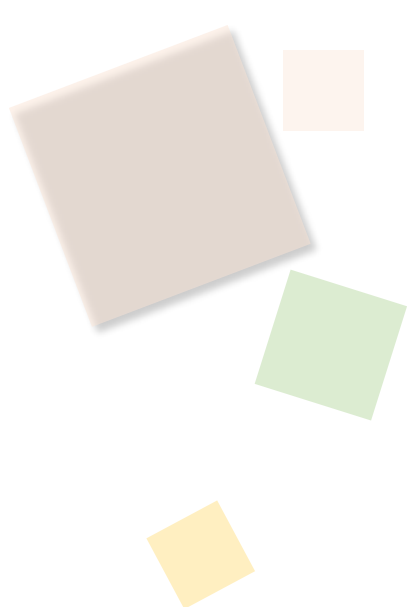
- ◆ Au Products: 187,635,122.77
- ◆ Ag (T+D): 24,758,053.28
- ◆ Others: 1,574,898.51



#### Popular Au Products Trading Amount (in 10,000 RMB)



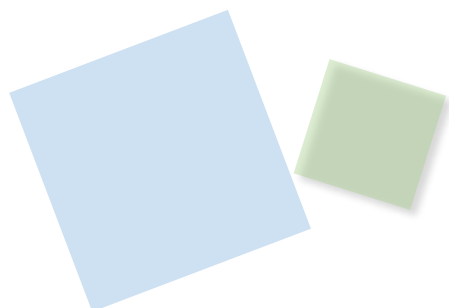
■ iAu9999 ■ Au99.99 ■ Au(T+D) ■ SHAU ■ mAu(T+D) ■ PAu99.99 ■ Others

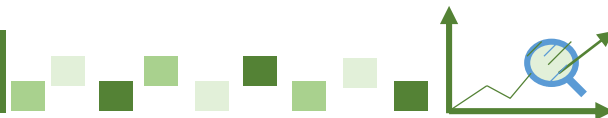




## Trading Volume & Amount in Details

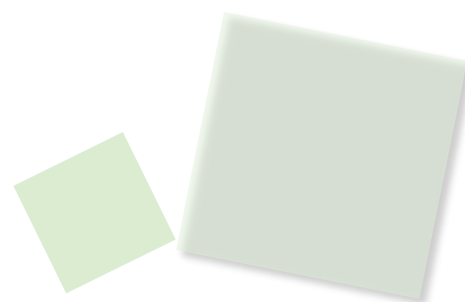
Trading Volume (in kg)							
Contract	Previous Month Daily Average	Present Month Daily Average	Previous Month accumulative total	Present Month accumulative total	Month-on -Month	Year-on -Year	Present Year accumulative total
Au99.95	755.27	964.78	16,616.00	22,190.00	33.55%	-78.89%	257,320.00
Au99.99	17,294.04	17,449.09	380,468.90	401,329.04	5.48%	-17.08%	4,203,611.20
Au100g	25.64	42.26	564.00	972.00	72.34%	32.14%	4,865.40
Au50g	0.00	0.00	0.00	0.00	-	-	0.00
Au995	0.00	0.00	0.00	0.00	-	-	3,900.00
iAu9999	845.65	2,885.39	18,604.30	66,364.02	256.71%	60.09%	442,966.70
iAu100g	0.01	0.00	0.20	0.00	-100.00%	-100.00%	10.80
iAu995	0.00	0.00	0.00	0.00	-	-	0.00
Au(T+D)	43,264.45	44,905.22	951,818.00	1,032,820.00	8.51%	-34.50%	7,668,490.00
mAu(T+D)	3,175.09	4,382.15	69,852.00	100,789.40	44.29%	-19.20%	740,800.00
Au(T+N1)	34.15	27.51	751.20	632.80	-15.76%	-99.75%	411,345.40
Au(T+N2)	2,257.96	190.47	49,675.20	4,380.80	-91.18%	-98.23%	232,619.00
PAu99.95	545.45	4,539.13	12,000.00	104,400.00	770.00%	1630.20%	193,596.00
PAu99.99	225,904.68	207,337.91	4,969,903.00	4,768,772.00	-4.05%	340.33%	23,660,321.80
PiAu99.99	24,854.54	18,493.06	546,799.94	425,340.44	-22.21%	-14.99%	5,043,407.62
PiAu50g	0.00	0.00	0.00	0.00	-	-	0.00
PiAu99.5	0.00	0.00	0.00	0.00	-	-	0.00
SHAU	7,118.27	5,076.78	156,602.00	116,766.00	-25.44%	-10.69%	1,087,522.00
Au Products (in total)	326,075.22	306,293.76	7,173,654.74	7,044,756.50	-1.80%	54.85%	43,950,775.92
Pt99.95	110.00	170.43	2,420.00	3,920.00	61.98%	44.12%	26,896.00
Ag99.9	0.00	0.00	0.00	0.00	-	-	0.00
Ag99.99	169.09	182.61	3,720.00	4,200.00	12.90%	-82.78%	83,460.00
Ag(T+D)	2,355,868.00	3,040,342.78	51,829,096.00	69,927,884.00	34.92%	-53.65%	525,882,530.00
PAg99.99	86,187.27	182,994.78	1,896,120.00	4,208,880.00	121.97%	-	29,833,980.00
<b>Total</b>	<b>2,768,409.58</b>	<b>3,529,984.37</b>	<b>60,905,010.74</b>	<b>81,189,640.50</b>	<b>33.31%</b>	<b>-47.77%</b>	<b>599,777,641.92</b>

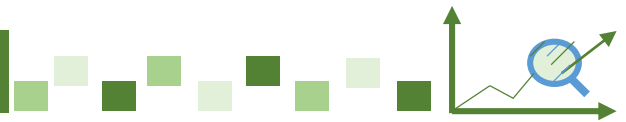




## Trading Volume & Amount in Details

Trading Amount (in 10,000 RMB)							
Contract	Previous Month Daily Average	Present Month Daily Average	Previous Month accumulative total	Present Month accumulative total	Month-on -Month	Year-on -Year	Present Year accumulative total
Au99.95	20,275.65	25,971.47	446,064.29	597,343.76	33.91%	-79.91%	7,043,266.22
Au99.99	465,503.15	466,838.58	10,241,069.22	10,737,287.29	4.85%	-20.29%	114,735,058.63
Au100g	688.00	1,123.28	15,136.07	25,835.39	70.69%	26.83%	131,457.67
Au50g	0.00	0.00	0.00	0.00	-	-	0.00
Au995	0.00	0.00	0.00	0.00	-	-	106,733.75
iAu9999	22,642.47	75,996.02	498,134.25	1,747,908.49	250.89%	53.20%	11,917,458.04
iAu100g	0.24	0.00	5.38	0.00	-100.00%	-100.00%	288.22
iAu995	0.00	0.00	0.00	0.00	-	-	0.00
Au(T+D)	1,159,470.46	1,192,059.14	25,508,350.07	27,417,360.32	7.48%	-37.08%	207,218,517.89
mAu(T+D)	85,078.60	116,329.79	1,871,729.25	2,675,585.18	42.95%	-22.41%	20,028,157.46
Au(T+N1)	942.92	750.94	20,744.29	17,271.52	-16.74%	-99.75%	11,346,981.93
Au(T+N2)	61,349.36	5,113.22	1,349,685.95	117,604.01	-91.29%	-98.29%	6,436,623.07
PAu99.95	14,629.28	120,861.42	321,844.20	2,779,812.68	763.71%	1544.04%	5,207,423.11
PAu99.99	6,067,527.14	5,523,533.13	133,485,597.15	127,041,262.03	-4.83%	319.97%	637,813,654.65
PiAu99.99	666,900.81	494,441.86	14,671,817.91	11,372,162.80	-22.49%	-17.48%	135,722,032.80
PiAu50g	0.00	0.00	0.00	0.00	-	-	0.00
PiAu99.5	0.00	0.00	0.00	0.00	-	-	0.00
SHAU	190,810.76	135,029.97	4,197,836.79	3,105,689.32	-26.02%	-14.01%	29,398,524.33
Au Products (in total)	8,755,818.86	8,158,048.82	192,628,014.82	187,635,122.77	-2.59%	48.50%	1,187,106,177.79
Pt99.95	2,133.83	3,245.80	46,944.28	74,653.42	59.03%	22.26%	547,380.36
Ag99.9	0.00	0.00	0.00	0.00	-	-	0.00
Ag99.99	61.59	65.92	1,355.04	1,516.08	11.88%	-83.79%	31,251.78
Ag(T+D)	856,537.19	1,076,437.10	18,843,818.17	24,758,053.28	31.39%	-57.56%	191,971,681.45
PAg99.99	31,543.94	65,162.13	693,966.58	1,498,729.02	115.97%	-	10,876,161.85
<b>Total</b>	<b>9,646,095.40</b>	<b>9,302,959.76</b>	<b>212,214,098.89</b>	<b>213,968,074.57</b>	<b>0.83%</b>	<b>15.81%</b>	<b>1,390,532,653.23</b>





## Other Market Data

### Delivery Volume

Delivery Volume (in kg)		
	Gold	Silver
Delivery Volume (Present Month)	944,412.06	5,686,530.00
Trading Volume (Present Month)	1,746,244.06	74,140,964.00
Delivery Ratio (Present Month)	54.08%	7.67%
Delivery Volume (Accumulative Total)	8,275,281.30	42,719,850.00
Trading Volume (Accumulative Total)	15,053,450.50	555,799,970.00
Delivery Ratio (Accumulative Total)	54.97%	7.69%
Withdrawal Volume (Present Month)	190,590.50	244,740.00
Withdrawal Volume (Accumulative Total)	1,366,434.70	1,121,040.00

### Price Comparison Chart (Gold)

